



MULTI-DRIVE

Powered by Force Door / FMK



About

Construction

Certificates

04

Module

Warning light & Lamp

PCB

Lithium battery

Camera

Programming module

Electric lock

Wireless safety devices

18

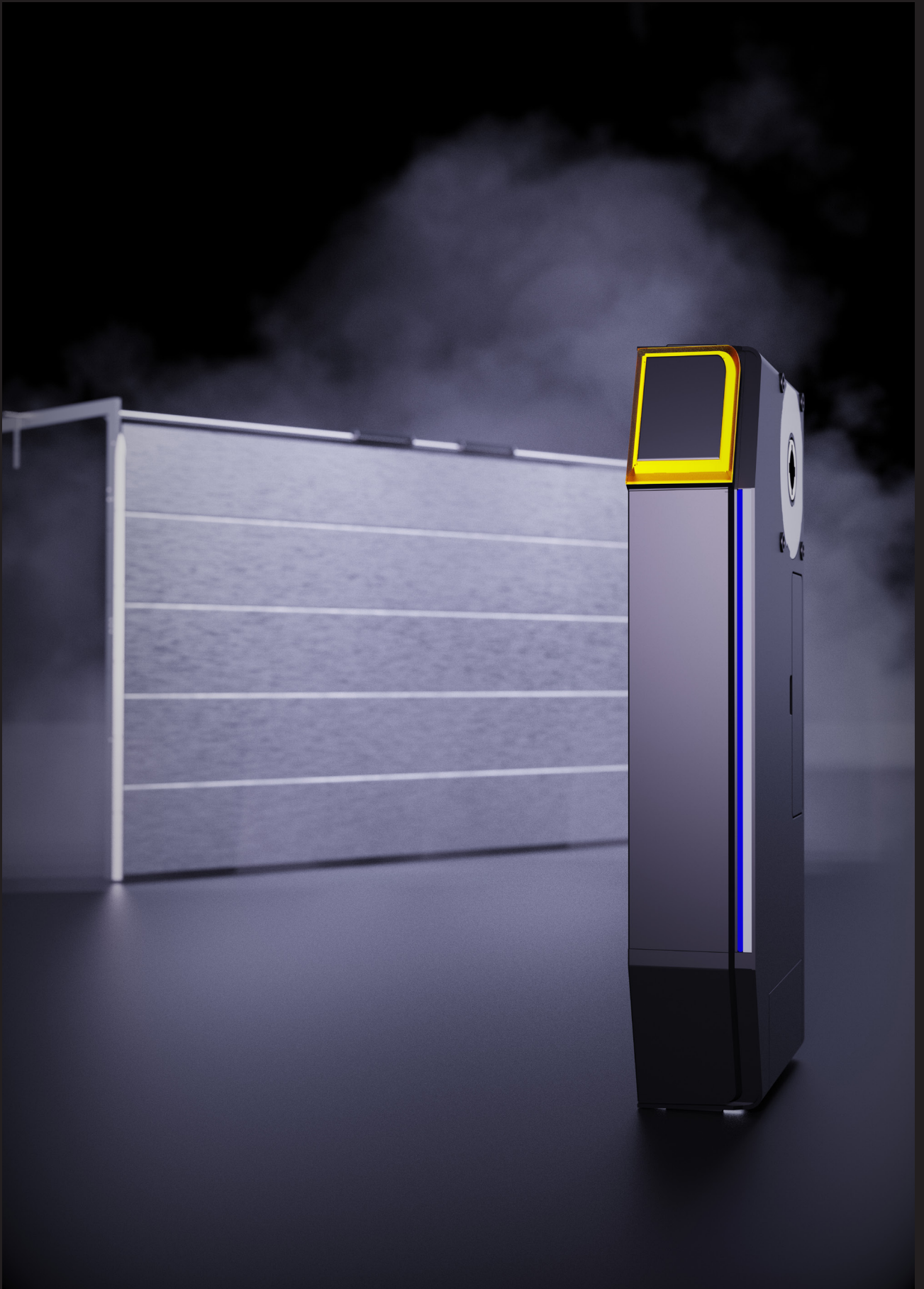
Advantages

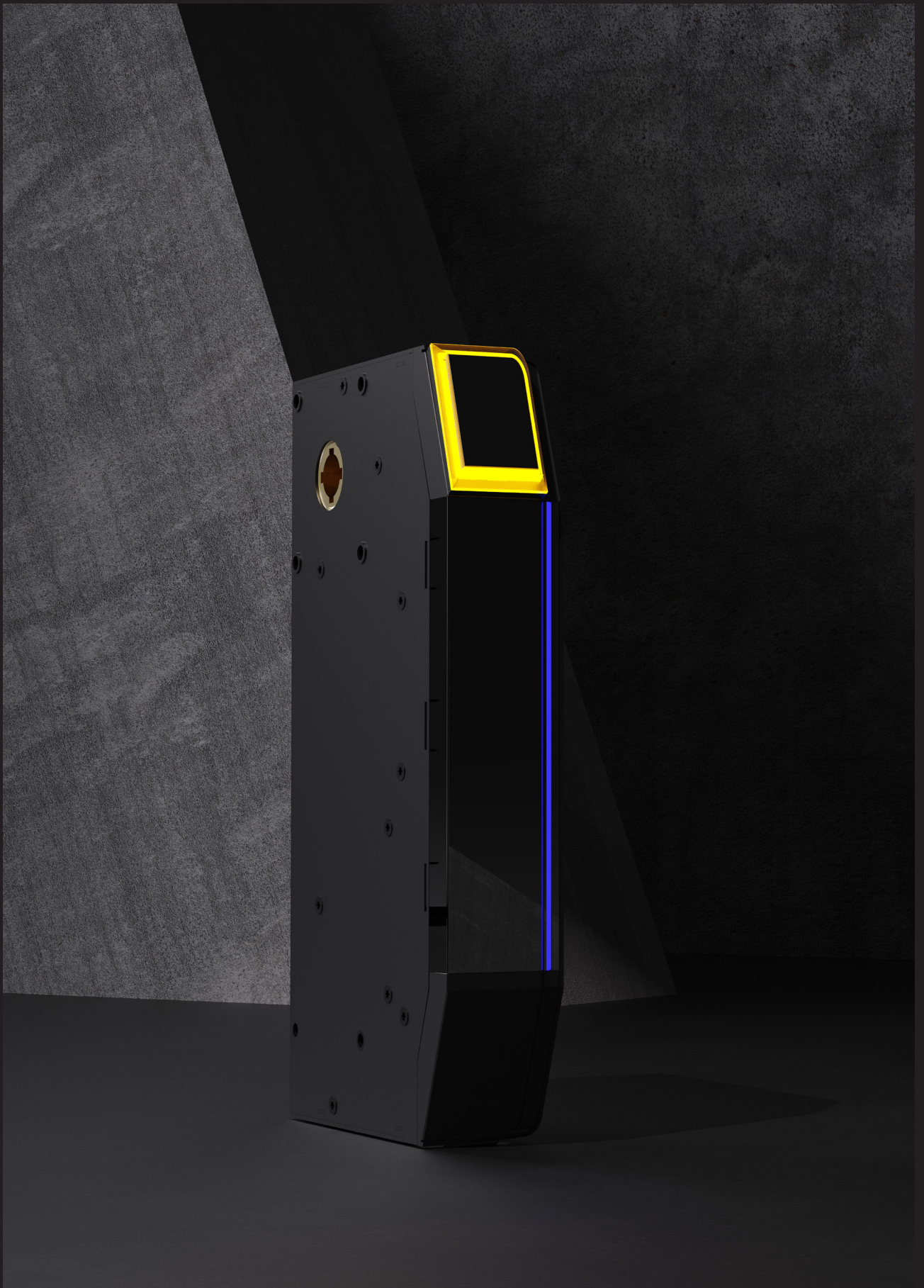
Smart

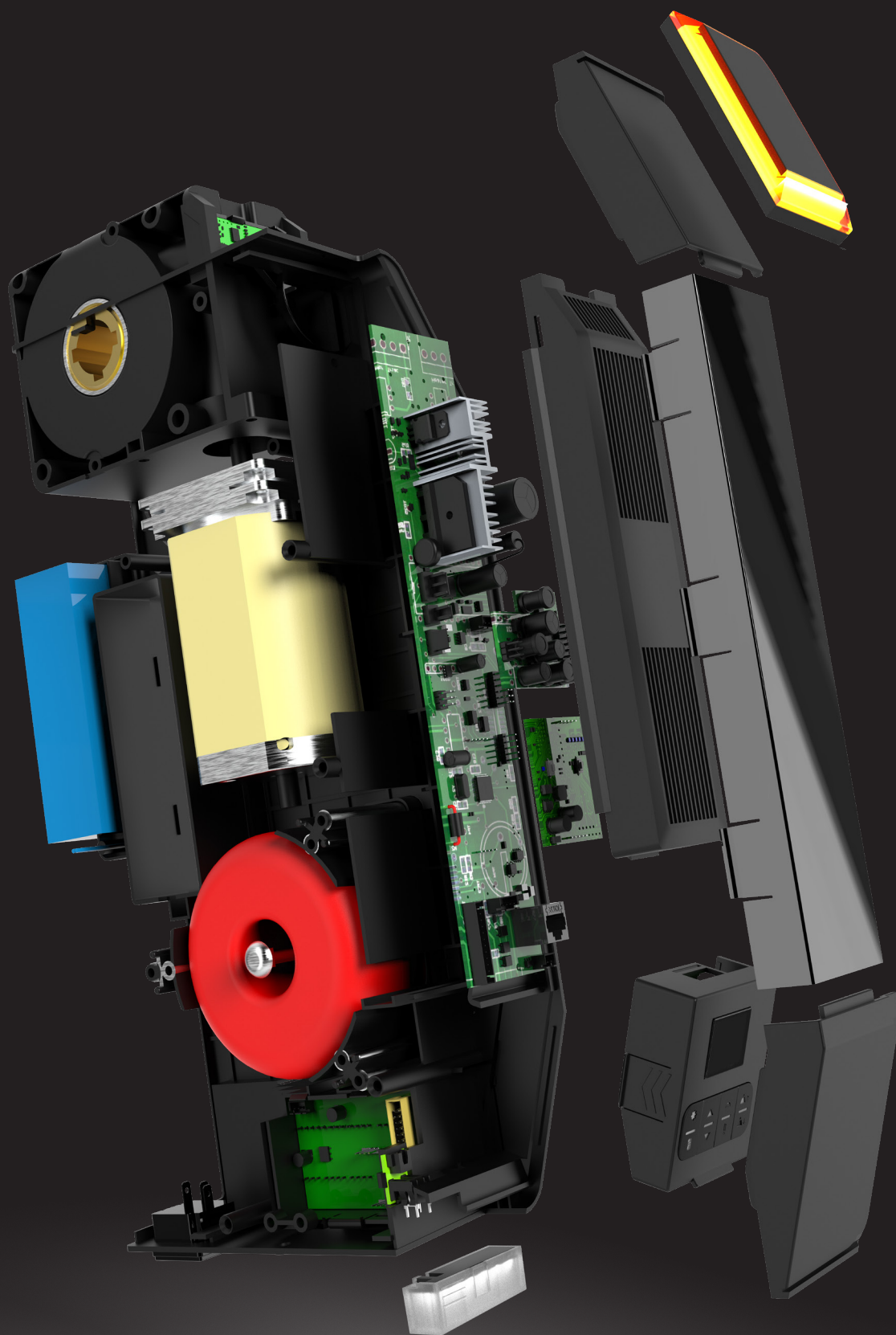
Safety

Technical information

34







Multi-selective

Introducing the new revolutionary garage door drive: Multi-Drive from Czech. Designed with versatility in mind, the Multi-Drive offers a range of installation options to fit virtually any garage. Its unique design allows for seamless integration with your home and ensures trouble-free operation from day one.

Upgrade to Multi-Drive today and experience the perfect combination of functionality, convenience and reliability that redefines what a garage door drive can be.



· 1000N / 18N.m for residential garage doors



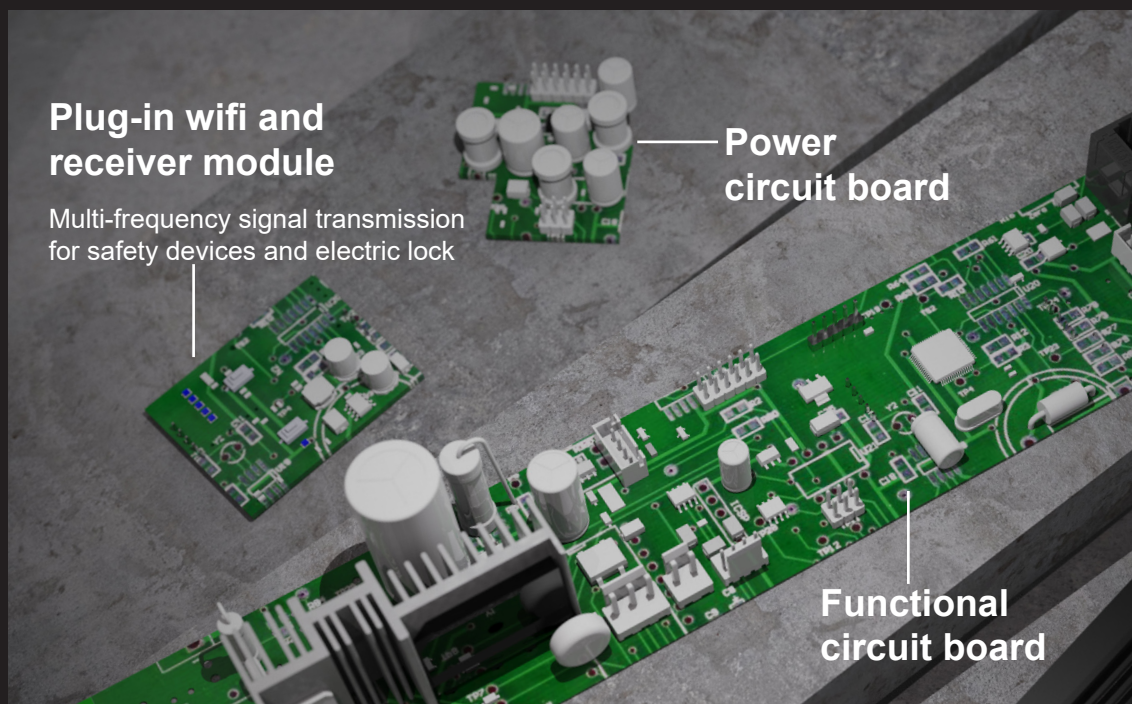
· 1500N / 25N.m or 1800N / 35N.m for commercial and light industrial doors

Materials



MULTI-DRIVE is equipped with an integrated battery backup, a thoughtful feature that ensures your garage door operator remains functional even in the event of a power outage. This built-in battery backup is a testament to the company's progressive approach to design, ensuring comfort and availability are maintained regardless of the circumstances.

PCB

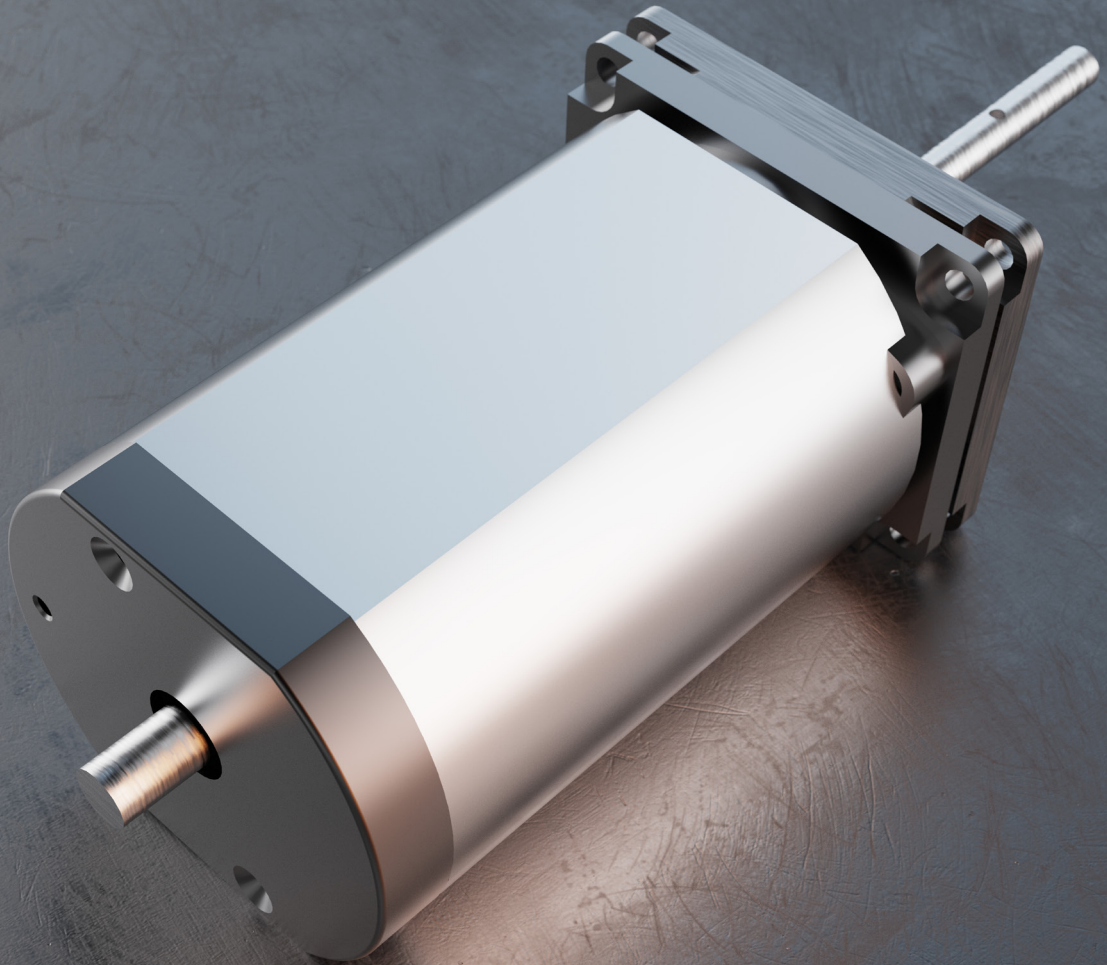


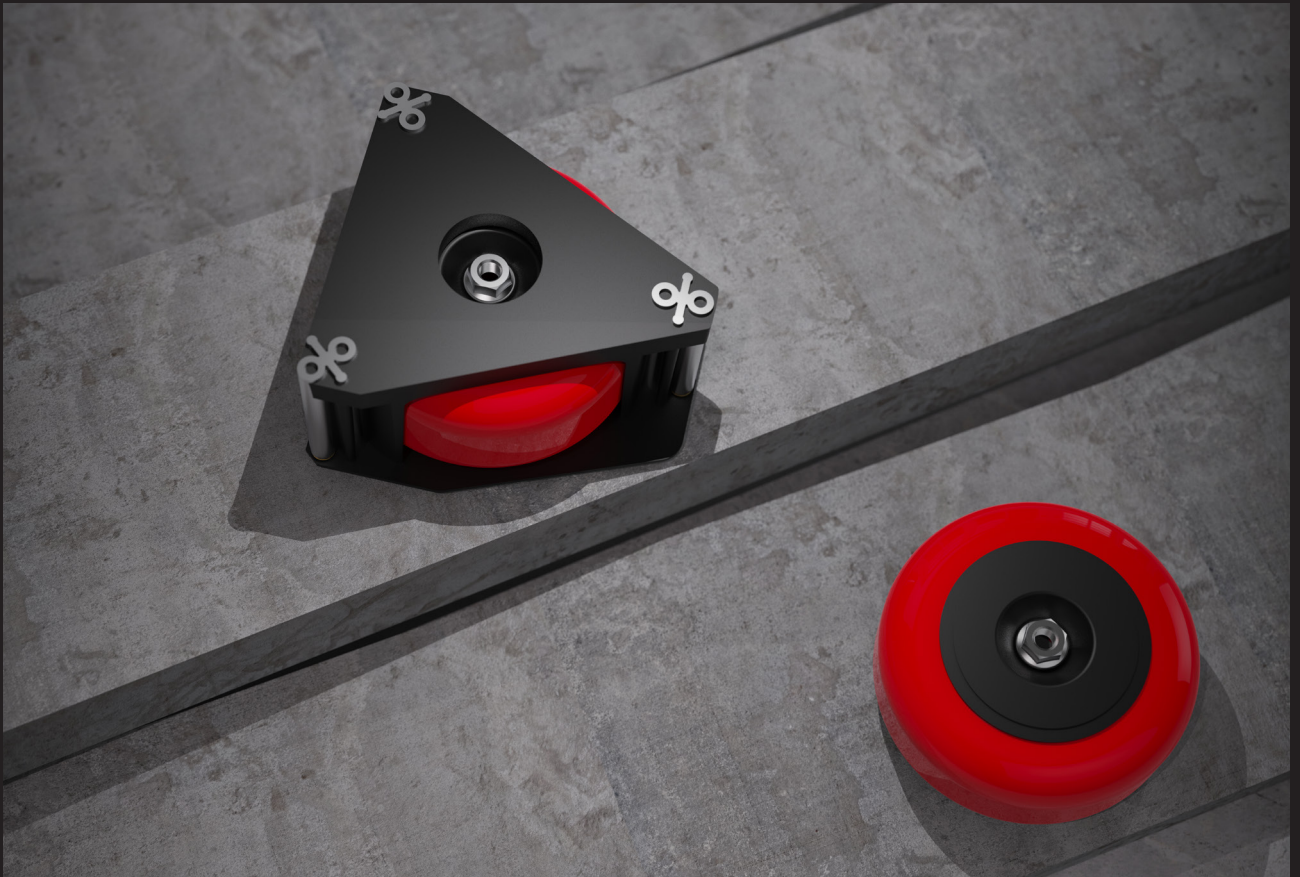
Built-in lithium battery

Incorporating this kind of durability into the Multi-Drive system shows a deep understanding of consumer needs. Not only does it offer peace of mind, but it also adds another layer of security and functionality, allowing homeowners to drive in and out of garages without interruption. The reliability of the built-in battery backup system is just another reason why the Multi-Drive, carefully manufactured in the Czech Republic, stands out on the market.



Motor



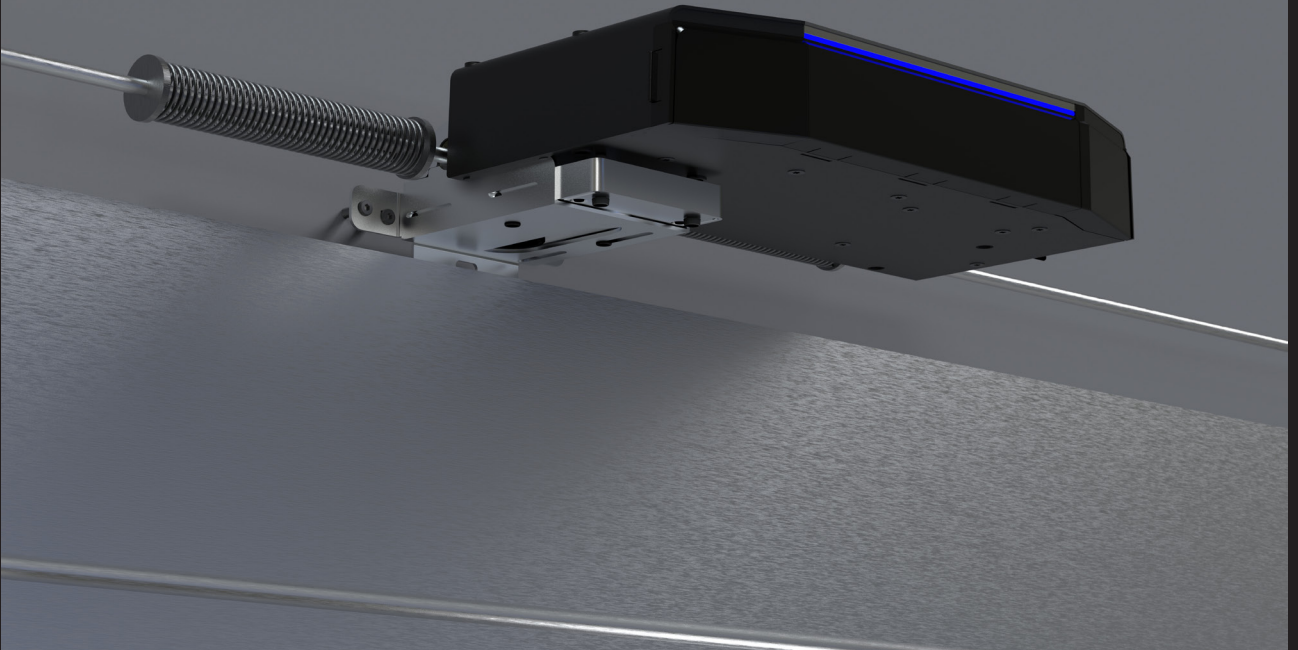


The Multi-Drive is equipped with brush direct current electric motors that ensure efficient, quiet and maintenance-free operation. All electric motors, transformers and gearboxes are subject to strict quality controls and meet equipment safety requirements.

Side installation



Mid-shaft instalation



Rail installation





Saving enviroment



Multi-Drive achieves energy savings and reduced power consumption through several key features:

- DC motors
- Efficient Standby Mode
- LED lighting
- Battery Backup
- Regenerative drive systems
- Smart Connection
- Precision Engineering

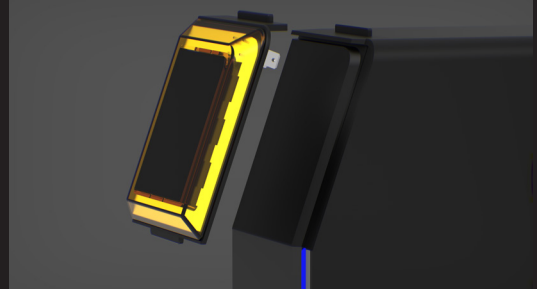
The combination of these features makes the Multi-Drive opener an energy-efficient choice as it uses less power in both active and standby mode compared to other openers that may use more traditional, less efficient technologies.



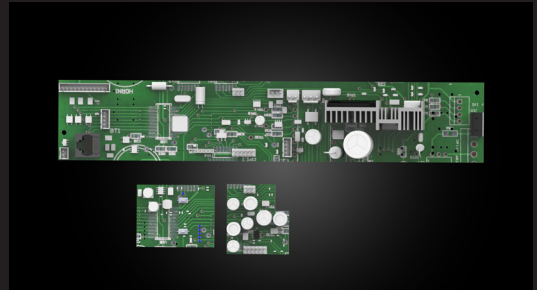


Module

20 Warning light & Lamp



22 PCB



24 Lithium battery



26 Camera



28 Programming module



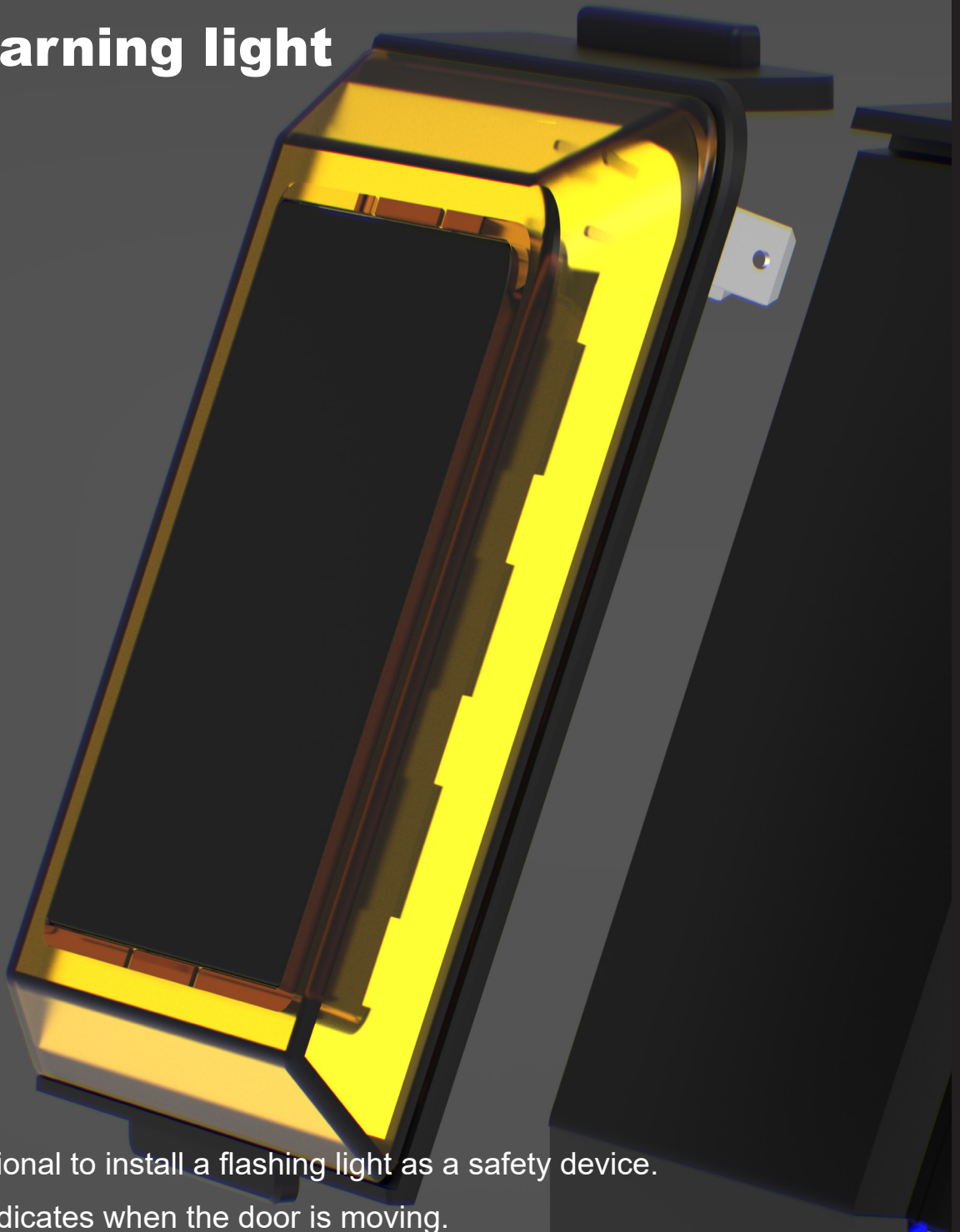
30 Electric lock



32 Wireless safety devices



Warning light



Optional to install a flashing light as a safety device.
It indicates when the door is moving.

LED LIGHT

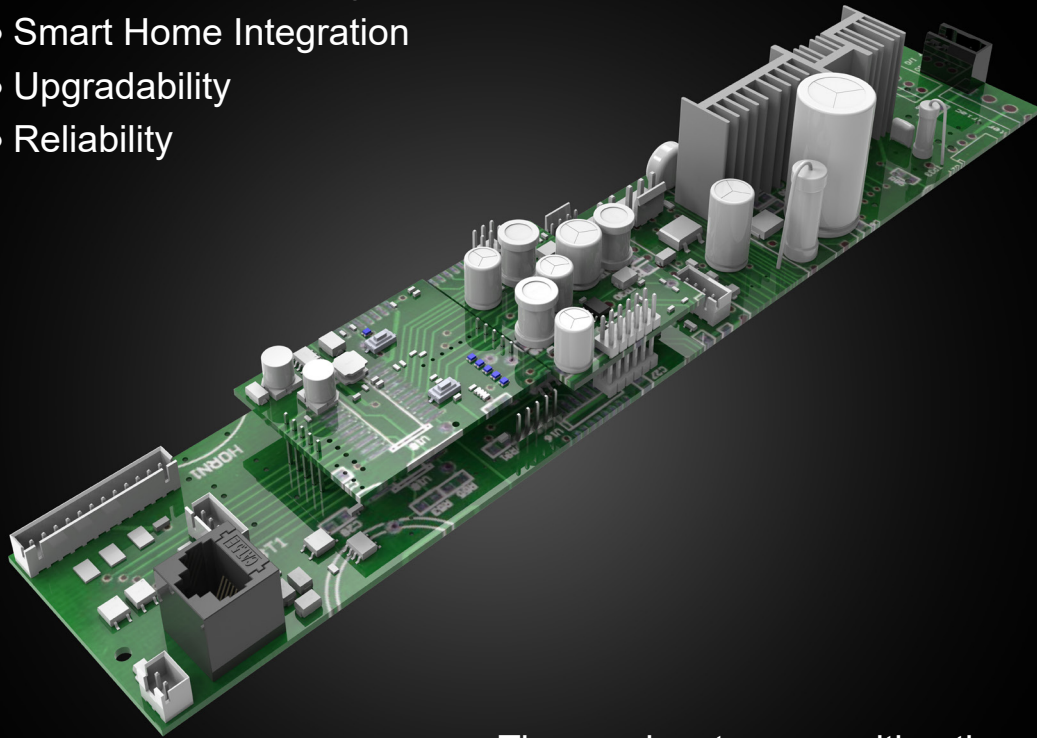


The MULTI-DRIVE opener includes integrated lighting. LEDs are used because they consume less energy compared to conventional or halogen bulbs and have a longer life, reducing energy consumption and maintenance.

PCB

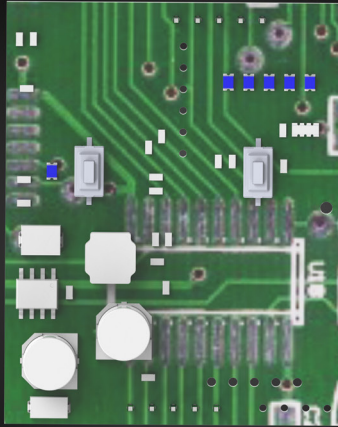
The Opener Multi-Drive PCBs are designed to offer a number of benefits, improving the overall functionality, durability and user-friendliness of the garage door opener system:

- Compact Design
- Built-in Microcontrols
- Durability
- Energy Efficiency
- Enhanced Safety Features
- Customizable Settings
- Smart Home Integration
- Upgradability
- Reliability



These advantages position the MULTI-DRIVE as a technologically advanced option suitable for modern households looking for hassle-free and efficient garage door control.

Wireless safety receiver



MULTI-DRIVE with wireless security and multi-frequency technology provides an excellent level of convenience and reliability for garage door opening systems.

Here are the benefits of these features:

- Interference Reduction
- Enhanced Security
- Improved Reach
- Wireless Security Sensors
- Obstacle Detection
- Battery Backup
- Regular self-checks
- False Trigger Reduction
- Convenient problem diagnosis

Overall, the combination of wireless security and multi-frequency technology in the Multi-Drive ensures a highly secure, convenient and user-friendly garage door system operating experience.

Built-in lithium battery

The Multi-Drive opener is equipped with an integrated battery backup, a thoughtful feature that ensures your garage door operator remains functional even in the event of a power outage. This built-in battery backup is a testament to the company's progressive approach to design, ensuring comfort and availability are maintained regardless of the circumstances.

Incorporating this kind of durability into the MULTI-DRIVE system shows a deep understanding of consumer needs. Not only does it offer peace of mind, it also adds another layer of security and functionality, allowing homeowners to drive in and out of their garages without interruption. The reliability of the built-in battery backup system is just another reason why the MULTI-DRIVE opener, carefully manufactured in the Czech Republic, stands out on the market.





The Multi-Drive is equipped with a built-in backup battery that allows the garage door opener to function even in the event of a power outage. This feature ensures that you are not locked out of your garage if there is a power outage, as the system can switch to battery power to operate the gate.

While the Multi-Drive itself does not directly use solar power, it is possible to integrate a solar system into the gate control, which can provide charging for a backup battery if your solar system is capable of this. Here are the steps you might consider for this integration:

- Charge Controller
- Battery backup charging
- Power Management

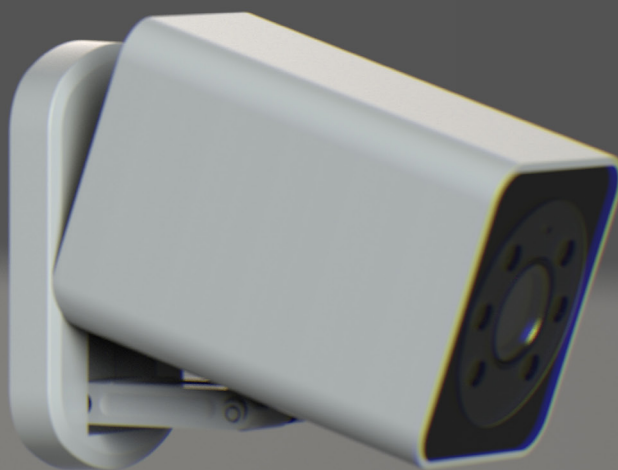
By integrating a solar energy system with battery storage with your Multi-Drive garage door opener, you will not only ensure that your opener remains functional during power outages, but you will also help reduce your carbon footprint and potentially lower your energy bills. However, this setup requires proper installation and security measures to ensure proper functioning.

Camera module

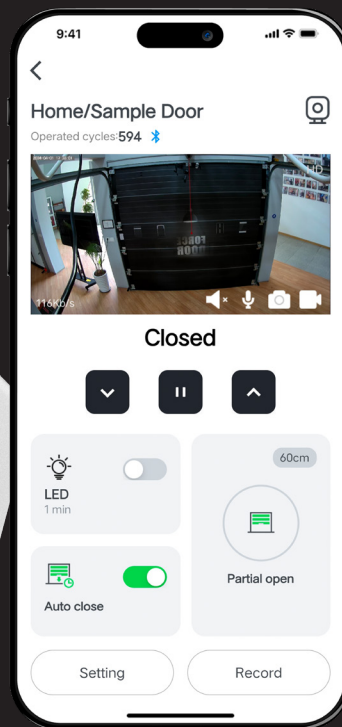
MULTI-DRIVE garage door openers can actually be equipped with additional features such as a camera that can be controlled using a special app such as F-LINX. Integrating a camera with your garage door opener adds a layer of security by allowing you to remotely monitor the garage area.

It could work like this:

Camera Integration
F-LINX App
Remote Access
Security
User Functions
Smart Home
Integration



Using the F-LINX app to control the MULTI-DRIVE and integrated camera provides a comprehensive way to manage access to your garage, monitor security and give you peace of mind knowing you have remote visibility and control over that area of your home. Note that this feature will depend on a reliable home Wi-Fi network and ensuring the camera and F-LINX app are properly set up for secure remote access and control.



3 million
pixels

IP 66
degree of protection

6 fill
lights

120°
viewing angle

0.5 T
computing power

360°
horizontal rotation

5-24 V
power supply supported

Storage
cloud storage
TF card storage compatible

2.4+5 G
dual frequency supported

Programming module

The MULTI-DRIVE garage door operator programming module is designed for "easy setup", meaning it is user-friendly and intended for direct configuration of system settings.

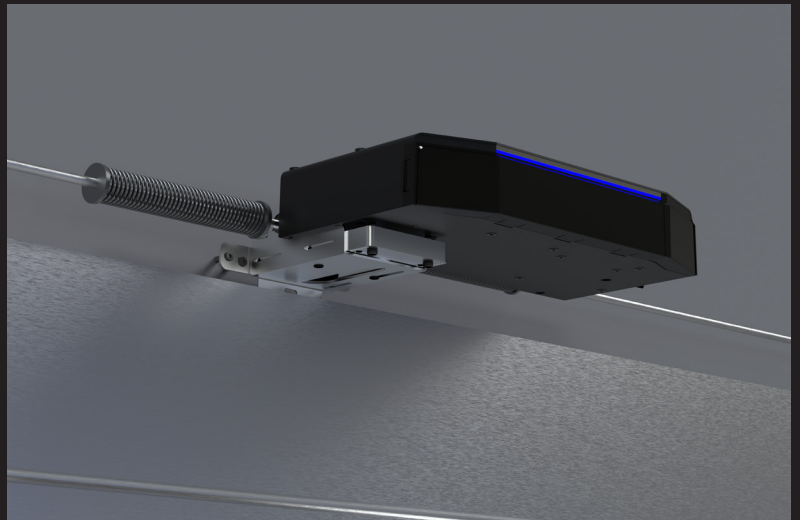
The 'easy setup' module prioritizes user convenience without compromising the functionality or safety of the MULTI-DRIVE system, ensuring that programming and fine-tuning of garage door opener settings is accessible to a wide range of users.

Improved compatibility



With multiple installation options, the MULTI-DRIVE can be adapted to different garage types, door sizes and hardware types, making it a universally adaptable solution for installers and users.

It can be installed on the shaft of the garage door spring system either to the side and to the center of the shaft when using the transmission system.



The MULTI-DRIVE opener can also be installed as a (classic) garage drive with a "C" rail with belt or chain.

Electric lock



The MULTI-DRIVE wireless electric lock is another security feature for the MULTI-DRIVE garage door system. It functions as an electronic lock that increases the safety and security of your garage door by providing an additional layer of protection against forced entry.



Features and benefits:

- Wireless Operation
- Automatic Locking
- Remote Control
- Safety Features
- Battery operation
- Tamper Alert
- Easy to program and manage
- Durable Construction



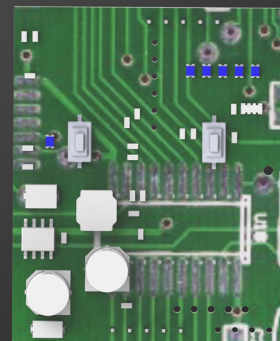
The MULTI-DRIVE wireless electric lock that represents additional convenience for users driven by top security measures. Users can benefit from a safe, reliable and user-friendly way to ensure their garage door remains locked and secure as part of their home security ecosystem.

SMART
CONNECT



Wireless safety devices

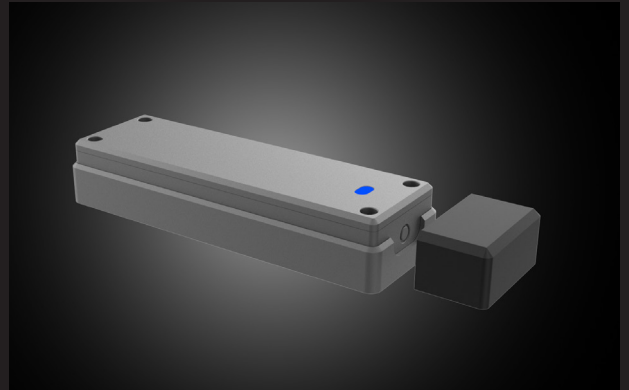
Multi-frequency:
An effective anti-interference
technology.



Plug-in wifi module
Plug-in receiver module



Wireless photo beam kit



Wireless wicket door kit



Wireless air switch kit



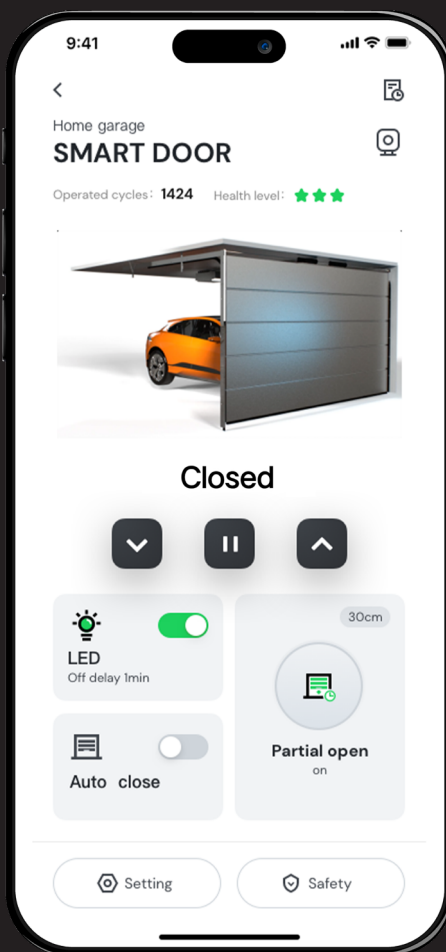
Wireless optical safety edge kit



Wireless slack rope kit

Smart

Multi-drive door opener optional plug-in wifi and receiver module



SMART
CONNECT

Safety



Recommendation: door size

Side installation & Mid-shaft installation

Model	Standard sectional doors with cylindrical cable drum	High lift sectional doors with cylindrical-conical cable drum	Vertical lift sectional doors with conical cable drum
1000N / 18N.m	10m ²	10m ²	9m ²
1500N / 25N.m	13m ²	13m ²	11m ²
1800N / 35N.m	16m ²	16m ²	14m ²

Rail installation

Model	1000N / 18N.m	1500N / 25N.m	1800N / 35N.m
	10m ²	13m ²	16m ²

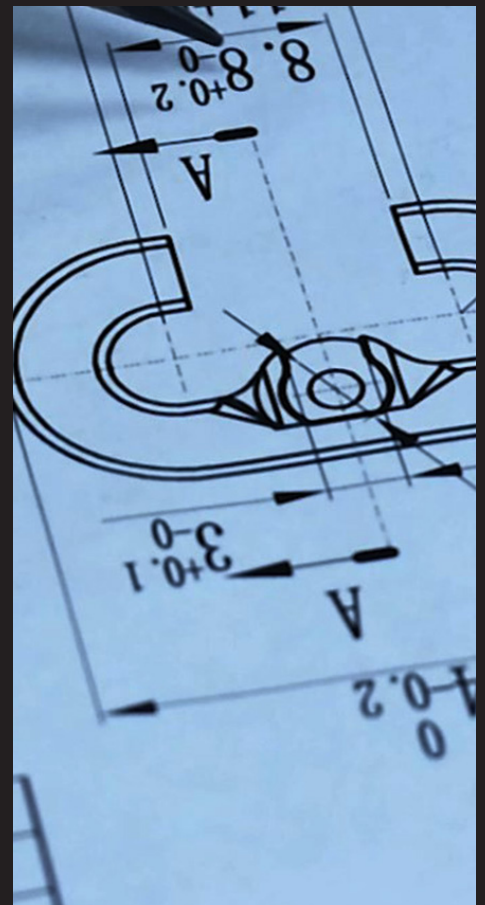
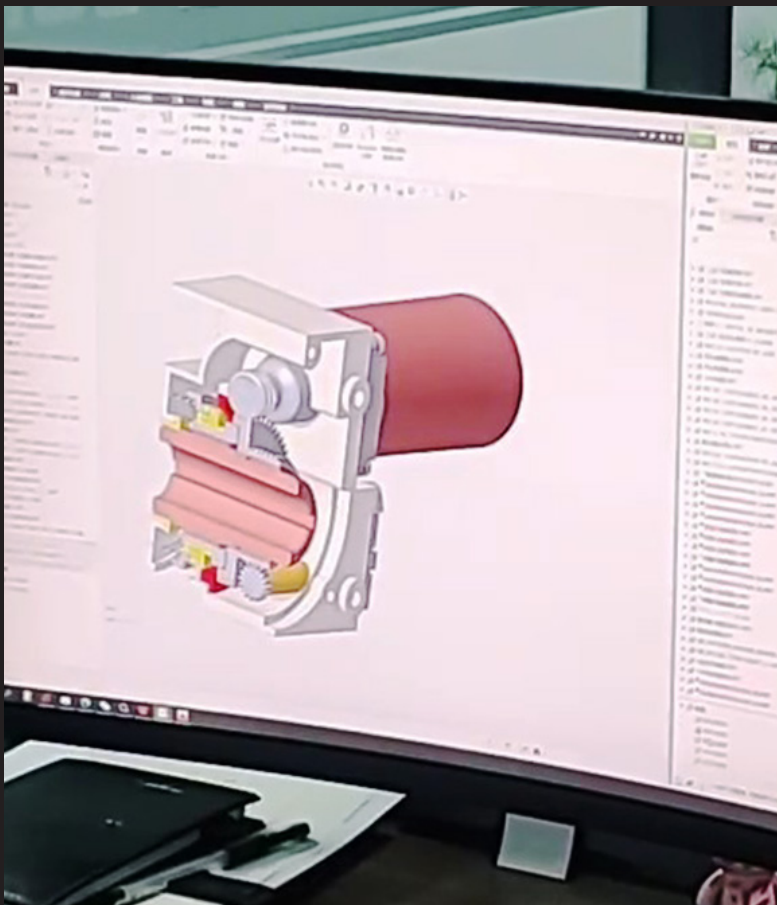
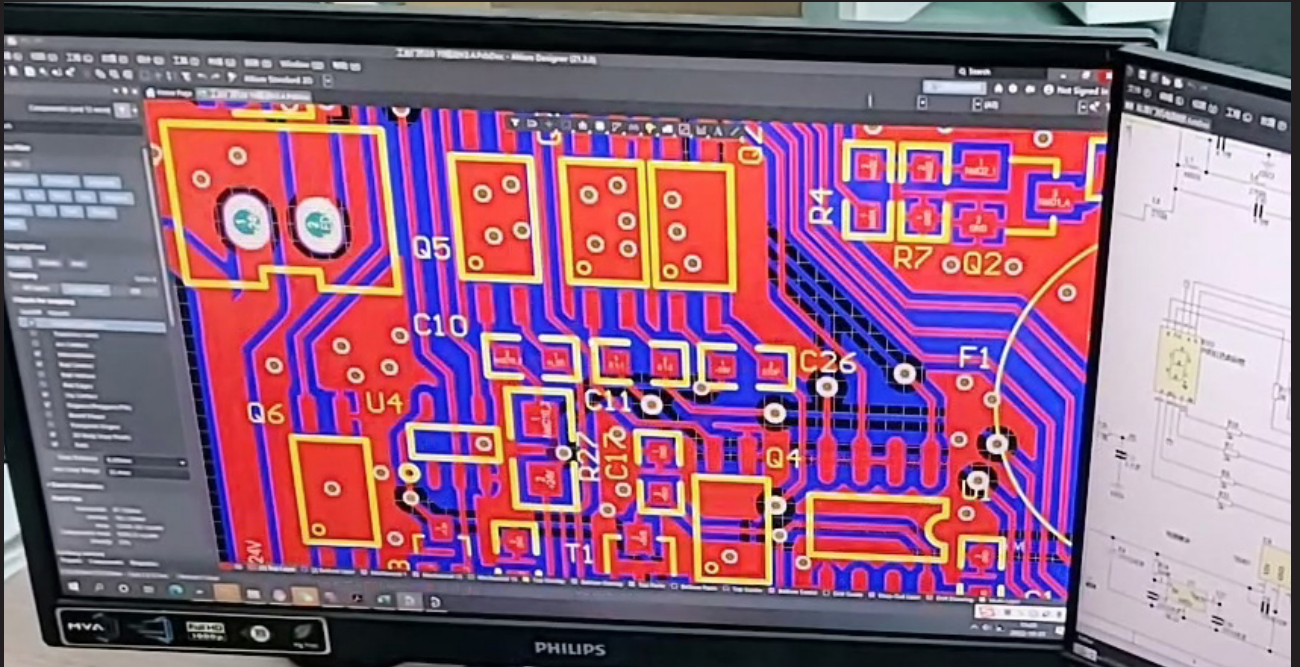
Remark: The above door area recommendation only based on the insulated door panel with 40mm thickness, and the door weight **≤11KG** per sq.m.

Remark: The above door area recommendation only based on a well spring balanced garage / commercial doors.

Technical information

	1000N / 18N.m	1500N / 25N.m	1800N / 35N.m
Max. output torque	25Nm	30Nm	35Nm
Rated output torque	21Nm	26Nm	31Nm
Output speed	24~40rpm		
Output shaft/ hollow shaft	φ25.4 mm		
Static holding torque	200Nm		
Input voltage	110-127V or 220-240V		
Motor power	280W	330W	380W
Control system	30V DC		
Duty rating	Door area ≤ 10m ² 60 cycles/H (Max) Door area > 10m ² 20 cycles/H		
Limit switch range (maximum revolutions of output shaft / hollow shaft)	15 turns		
Temperature range	-20°C~+60°C		
Installation	Side installation, Mid-shaft installation, Rail installation		

Product development







Wuxi Force Technology Co.,Ltd.

Building H Plainvim Industrial
Park (No. 30 Wanquan Road)
Wuxi, China

Tel +86 510 88796565

E-mail sales@forcedoor.cn

www.forcedoor.com

FMK motorized.s.r.o

Kotojedy 110
767 01 Kroměříž
Czech Republic

Tel +420 774 773 319

E-mail sales@fmk-motorized.com

www.fmk-motorized.com